

Magnolia Network

Production Deliverables - Still Photography

Production companies are required to submit digital photography of the production for brand use. These photos will be used as marketing materials for the show. We suggest having a designated crew member responsible for taking quality photos and delivering consistency throughout the episodes.

DELIVERY SPECS

A minimum of **30 stills per episode** are required. All images should be uploaded to Discovery's Producer Portal at the time of **Rough Cut** delivery. For technical issues, contact PMD_Deliverables_Team@discovery.com

Camera

Professional SLR camera is required – set to the highest quality, lowest compression, and highest resolution.

Format

JPG format only: minimum of 4000 pixels on the shorter side. Do not upsize.

No frame grabs or cell phone photos. Hi-def video exports will be accepted in certain circumstances.

PHOTO STYLE GUIDE

Photos should be:

- Lit evenly with natural or natural feeling light
- Framed similar to show camera – shoot next to camera, or step in and recreate scene during stop-downs
- A mix of horizontal and vertical – lean in more to horizontal shots
- Color corrected to be natural, matching show color.
- Clearly focused on subject
- Utilizing clean, straight horizon lines

We will NOT accept photos that:

- Have not been shot by your production company
- Are out of focus, under or over exposed, or not framed properly
- Contain irrelevant content to the production (avoid camera EQ/ crew in frame)
- Are video/frame grabs
- Are purchased stock images





MAGNOLIA NETWORK

SHOT LIST

To-Camera

Solo and group shots of hosts and/or guests looking to-camera in context to the show.



Episodic & Candid

Action shots of hosts during filming, working, interacting with guests, etc. following the action of the show.



Food Beauties

Hero photos of finished dishes shot at an angle to make food as attractive as possible, with natural light and simple styling. Shallow depth of field always looks great with food beauties (lower aperture such as f/2.8 is recommended).

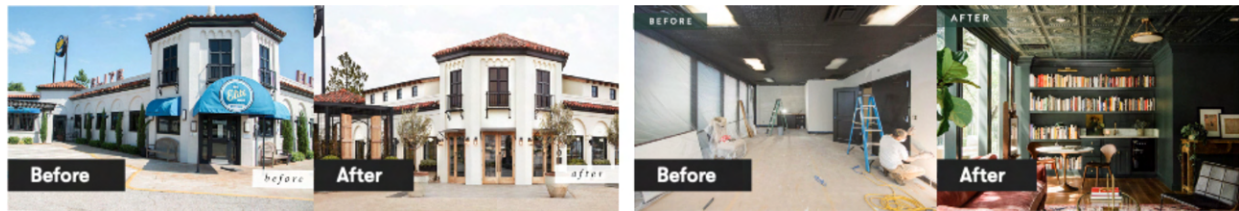




MAGNOLIA NETWORK

Interior / Exterior Reveals

Before and after photos of each room / project – shot from the same angle to showcase the restoration.



Set Location & Environment

Clean exterior & interior shots of locations visited. Any additional shots that give context to the story.



Any questions?

We're here to help!

Emily Huynh

emily_huynh@discovery.com

Brittany Carr Seely

brittany_carrseely@discovery.com